



## DATA SHEET NO. 5118-350

### PRECON® WINTER-GRADE Pre-Applied/Underslab Waterproofing Membrane

#### DESCRIPTION

PRECON WINTER-GRADE is a composite sheet membrane comprised of a non-woven fabric, elastomeric membrane, and W. R. MEADOWS' exclusive PLASMATIC CORE. The PLASMATIC CORE is a seven-layer matrix designed for toughness and provides the lowest water vapour transmission (WVT) rating on the market. Once concrete is poured against PRECON WINTER-GRADE and the concrete cures, a mechanical bond forms that secures the concrete to the membrane.

#### USES

PRECON WINTER-GRADE is used as a blindside membrane in vertical applications where access to the positive side is limited. The membrane can also be used for horizontal applications for underslab waterproofing and vapourproofing. This low temperature version can be installed in temperatures down to -7° C and rising.

#### FEATURES/BENEFITS

- Provides a waterproof seal between the membrane and poured concrete wall.
- Helps prevent moisture migration into the structure.
- Helps reduce methane and radon gas intrusion.

#### PACKAGING

1.2 m (4') wide x 15.2 m (50') long rolls, one roll per carton.

#### STORAGE AND HANDLING

Store membrane cartons on pallets and cover if left outside. Keep materials away from sparks and flames.

#### APPLICATION

**Surface Preparation** ... Inspect all surfaces for any conditions detrimental to the proper completion of the work. Surfaces should be structurally sound. Remove debris or any other foreign material that could damage the membrane.

PRECON WINTER-GRADE can be used with a caisson wall shoring system without the use of a drainage board, such as MEL-DRAIN™ from W. R. MEADOWS. W. R. MEADOWS recommends proper site drainage, but due to certain site conditions this sometimes cannot be done effectively. The decision to remove the drainage board should be at the discretion of the engineer. In situations where a drainage board is not applied, surface preparation is important. The substrate needs to be sound, solid, and smooth. Any gaps or voids >25 mm (1") need to be grouted. When PRECON WINTER-GRADE is used with MEL-DRAIN from W. R. MEADOWS, the system can bridge gaps 50.8 mm (<2"). However, gaps >50.8 mm (2") will need to be grouted.

**Application Method** ... PRECON WINTER-GRADE can be used in temperatures down to -7 C and rising

Prior to application of the blindside membrane, attach MEL-DRAIN™ rolled matrix drainage system from W. R. MEADOWS to lagging or soil retention system.

In vertical applications of PRECON WINTER-GRADE, mechanically attach with fasteners every 304.8 mm (12") across the top, within 13 mm (½") of the top edge of the membrane. Install the membrane with the fabric side facing toward the concrete pour.

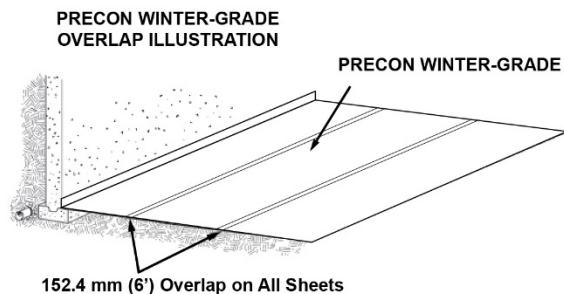
Remove release paper on 152.4 mm (6") overlap. Apply membrane and roll press into place with a tile type roller.

**End Laps** ... For optimum performance, HYDRALASTIC 836 from W. R. MEADOWS should be used for all end lap details and terminations. For detailed information, see PRECON COLD WEATHER APPLICATION TECHNICAL BULLETIN available at [www.wrmeadows.com](http://www.wrmeadows.com).

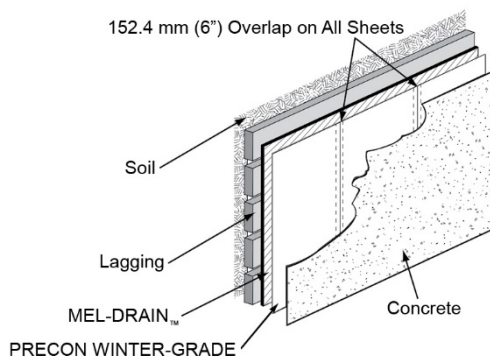
**W. R. MEADOWS® OF CANADA**  
70 Hannant Court, Milton, ON L9T 5C1  
21 Streambank Ave., Sherwood Park, AB T8H 1N1  
(800) 342-5976  
Montreal Sales: (514) 865-2406

Hampshire, IL / Cartersville, GA / York, PA / Fort Worth, TX  
Benicia, CA / Pomona, CA / Goodyear, AZ / Milton, ON  
Sherwood Park, AB  
[www.wrmeadows.com](http://www.wrmeadows.com)  
[info@wrmeadows.com](mailto:info@wrmeadows.com)

**Penetrations and Protrusions** ... Detail around all horizontal and vertical penetrations using HYDRALASTIC 836. Apply HYDRALASTIC 836 by forming a fillet around the pipe or protrusion, overlapping the fabric side of PRECON WINTER-GRADE and the protrusion a minimum of 64 mm (2.5"). If the gap between the protrusion and the membrane is greater than 13 mm (½"), apply DETAIL FABRIC over uncured HYDRALASTIC 836. All penetration and protrusion surfaces must be clean, rust-free, and sound prior to application of HYDRALASTIC 836.



**PRECON WINTER-GRADE  
BLINDSIDE/UNDERSLAB MEMBRANE**



For horizontal applications involving a cluster of penetrations, again use HYDRALASTIC 836. Prior to application of HYDRALASTIC 836, prepare the surfaces of the penetrations as above and provide a block out using .6 x 1.2 m (2' x 4') lumber or other in order to create a "pitch pan" area to receive HYDRALASTIC 836.

**Patching** ... Prior to pouring, inspect membrane for punctures or damage and repair as necessary with HYDRALASTIC 836 and/or DETAIL FABRIC. In addition, ensure the membrane is free of standing water and has been cleaned of any deleterious materials that will affect the bond of the concrete to the membrane.

**Underslab Application** ... Refer to ACI 302.1R-04: Chapter 4 – Site Preparation and Placing Environment for sub-grade preparation prior to PRECON WINTER-GRADE placement.

**PRECAUTIONS**

Concrete should be poured within 60 days of membrane installation. When using bar supports, use those with a flat bottom. PRECON WINTER-GRADE should not experience temperatures above 49° C due to air and sunlight exposure prior to concrete being placed. HYDRALASTIC 836, when applied at -7 °C), can take up to two weeks to fully cure. This is dependent on exposure to humidity during curing time. Low humidity will delay the cure time.

© SEALTIGHT is a registered trade mark of W. R. Meadows

**WARRANTY:** W. R. Meadows of Canada warrants that, at the time and place we make shipment, our materials will be of good quality and will conform with our published specifications in force on the date of acceptance of the order. THE FOREGOING WARRANTY SHALL BE EXCLUSIVE AND IN LIEU OF ANY OTHER WARRANTY, EXPRESS OR IMPLIED, INCLUDING THE IMPLIED WARRANTIES OF MERCHANTABILITY AND FITNESS FOR A PARTICULAR PURPOSE AND ALL OTHER WARRANTIES OTHERWISE ARISING BY OPERATION OF LAW, COURSE OF DEALING, CUSTOM OF TRADE OR OTHERWISE. As the exclusive remedy for breach of this Warranty, we will replace defective materials, provided, however, that the buyer examine the materials when received and promptly notify us in writing of any defect before the materials are used or incorporated into a structure. Three (3) months after W. R. Meadows of Canada has shipped the materials, all our Warranty and other duties with respect to the quality of the materials delivered shall conclusively be presumed to have been satisfied, all liability therefore terminates and no action for breach of any such duties may thereafter be commenced. W. R. Meadows of Canada shall in no event be liable for consequential damages. Unless otherwise agreed to in writing, no warranty is made with respect to materials not manufactured by W. R. Meadows of Canada. We cannot warrant or in any way guarantee any particular method of use or application or the performance of materials under any particular condition. Neither this Warranty nor our liability may be extended or amended by our salesmen, distributors or representatives, or by our distributor's representatives, or by any sales information or drawings.

**TECHNICAL DATA**

| Property                              | Test Method               | PRECON WINTER-GRADE Results  |
|---------------------------------------|---------------------------|--|
| Thickness                             | ASTMD 1000                | 1.85 mm<br>(73 mil)  |
| Low Temp Flexibility                  | ASTM D1970, 180° @ -32° C | Pass   |
| Resistance to Hydrostatic Head        | ASTM D5385-93             | 70 m (230')  |
| Elongation, Polymeric Membrane        | ASTM D412-06              | >400%  |
| Tensile Strength, Film                | ASTM D882                 | 63.4 MPa (9200 psi)  |
| Crack Cycling                         | ASTM C836<br>@ -15° F     | Pass   |
| Puncture Resistance                   | ASTM E154                 | >934 N<br>(>210 lb.)   |
| Peel Adhesion to Concrete             | ASTM D903                 | 1754 N/m<br>(10 lb./in)  |
| Moisture Vapour Transmission          | ASTM E96B                 | 0.0011 perms<br>(0.007 gram/m <sup>2</sup> /24 hr)<br>(0.0004 grains/ft. <sup>2</sup> /hr) |
| Radon Transmittance (m/s)             | k124/02/95                | <3.0 x 10 <sup>-9</sup>  |
| Radon Coefficient (m <sup>2</sup> /s) | k124/02/95                | <5.6 x 10 <sup>-12</sup>   |



2025-09-10

**W. R. MEADOWS® OF CANADA**  
**70 Hannant Court, Milton, ON L9T 5C1**  
**21 Streambank Ave., Sherwood Park, AB T8H 1N1**  
**(800) 342-5976**  
**Montreal Sales: (514) 865-2406**

Hampshire, IL / Cartersville, GA / York, PA / Fort Worth, TX  
 Benicia, CA / Pomona, CA / Goodyear, AZ / Milton, ON  
 Sherwood Park, AB  
[www.wrmeadows.com](http://www.wrmeadows.com)  
[info@wrmeadows.com](mailto:info@wrmeadows.com)